

MAKING RATE MADE EASIER

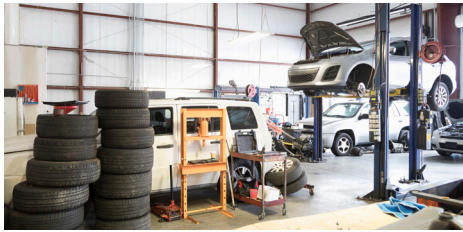


1211MAX SERIES HIGH SPEED RATCHET

SPEED, TORQUE, ENDURANCE — 1211MAX MARKS THE SWEET SPOT

1211MAX-D3 & 1211MAX-D4 High Speed Impact Ratchets

When time is of the essence, no tool is more essential than the new 1211MAX Series High Speed Ratchet. Available in 3/8" or 1/2" drive models, the 1211MAX redlines at a free speed of 625 RPMs while unloading 80 ft-lbs of nut-busting torque from a reactionless impact mechanism for breakneck bolt running. This kind of comfort was built purposefully with elite ergonomics, versatility, and safety, alongside thoughtful design features like a composite handle, contoured trigger activator, and an accessible form that lets you tighten in the tightest spots—while an advanced, ratcheting mechanism allows for easier run down and final tightening. With the 1211MAX at your disposal, speed, torque, endurance are at your command.



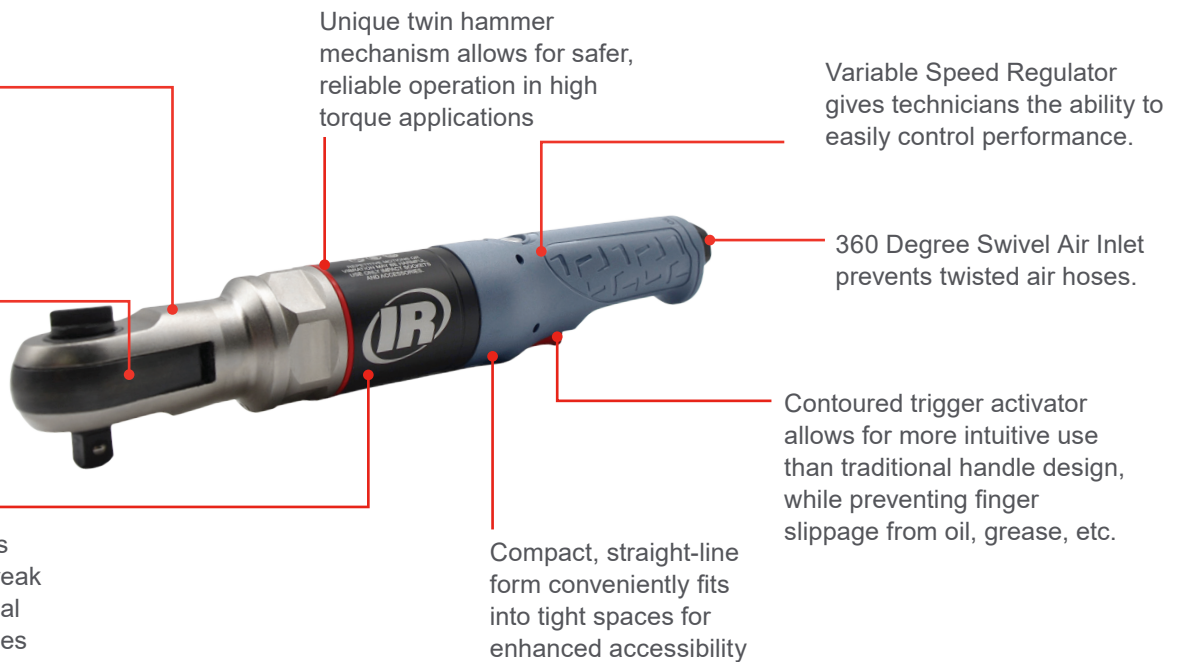
Vehicle Repair



Light Assembly



Industrial Maintenance



625 RPMs lets you get more done, faster

Unique twin hammer mechanism allows for safer, reliable operation in high torque applications

Variable Speed Regulator gives technicians the ability to easily control performance.

Nickel Plated Housing provides enhanced corrosion resistance

360 Degree Swivel Air Inlet prevents twisted air hoses.

Advanced ratchet mechanism delivers powerful manual break loose ability and final tightening capabilities

Compact, straight-line form conveniently fits into tight spaces for enhanced accessibility

Contoured trigger activator allows for more intuitive use than traditional handle design, while preventing finger slippage from oil, grease, etc.

1211MAX SERIES HIGH SPEED IMPACT RATCHETS

Model	Drive Size in	Switch Type	Free Speed RPM	MAX Tightening Torque ft-lb (Nm)	Nut-Busting Torque ft-lb (Nm)	Impact Sound Level dBa	Weight lb (kg)	Length in (mm)
1211MAX-D3	3/8"	Trigger	625	66 (89)	80 (108)	91.1	3.03 (1.38)	11.89 (302)
1211MAX-D4	1/2"	Trigger	625	66 (89)	80 (108)	92.1	3.03 (1.38)	11.89 (302)